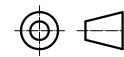


| SPECIFICATION | CONNECTION | VALUE |
|--|------------|------------------------|
| GEAR RATIO | | 5 |
| EFFICIENCY | | 96.00% |
| BACKLASH@NO-LOAD(arcmin) | | <=15 |
| MAX.PERMISSIBLE TORQUE(Nm)[lb-in] | | 28.00[247.82] |
| MOMENT PERMISSIBLE TORQUE(Nm)[lb-in] | | 56.00[495.64] |
| GEARBOX MATCHING MOTOR'S INPUT SHAFT LENGTH (mm) | | 21~24 |
| NOISE(dB) | | <=60 |
| WATERPROOF RATING | | IP54 |
| LIFE(h) | | 20000 |
| AMBIENT TEMPERATURE | | -10°C~90°C[14°F~194°F] |



| | | | |
|-------|-----------|--|----------|
| | APVD | | 3.2.2021 |
| | CHKD | | |
| 2:3 | DRN | | |
| SCALE | SIGNATURE | | DATE |

PLANETARY GEARBOX

TQEG23-G5-D10