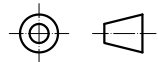
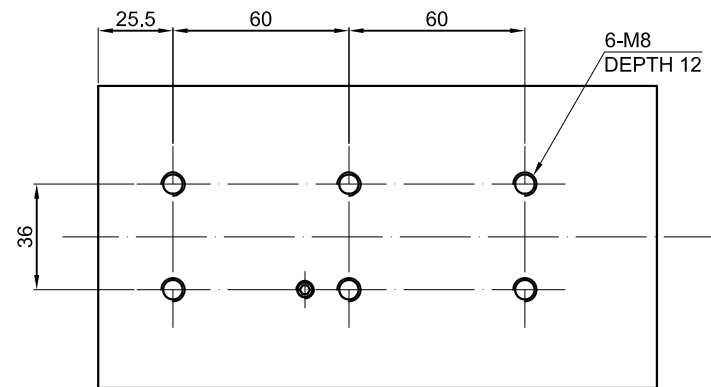


B

B VIEW BOTTOM OF SHELL



SPECIFICATION	VALUE
POWER (Kw)	4.5
VOLTAGE (VAC)	380
RATED CURRENT (A)	9.5
MAXIMUM SPEED (RPM)	18000
FREQUENCY (Hz)	300
NUT MODEL	ER32
COLLET (mm)	Ø6、Ø6.35、Ø12、Ø12.7
RUNOUT OFF (mm)	LESS THAN 0.005
BEARINGS	2x7008C(P4) + 2x7004C(P4)
COOLING	AIR COOLED
MATERIAL	STAINLESS STEEL
LUBRICATION	GREASE
WEIGHT (Kg) [lb]	12.4 [27.34]

	mm	APVD		5.24.2019
	UNIT	CHKD		
	3:1	DRN		
	SCALE	SIGNATURE		DATE

**SPINDLE MOTOR**

**GDZ120×103-4.5C4**