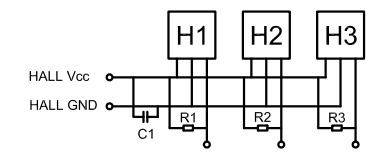
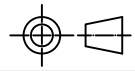


HALL CONNECTION

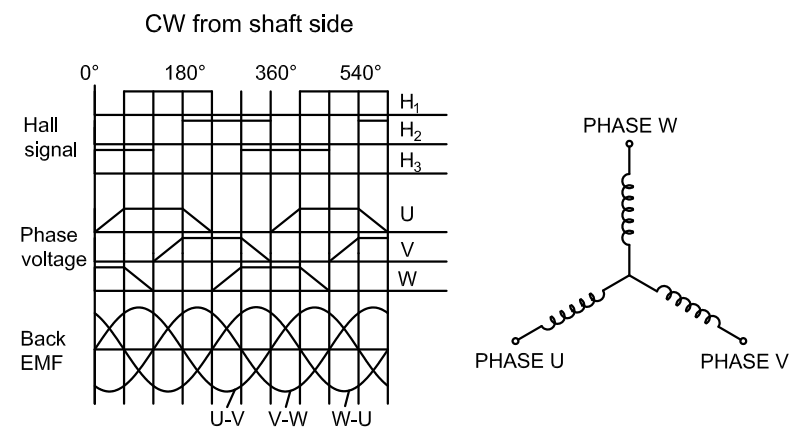


C1 = 0.1uF
R1/R2/R3 = 10KΩ



SPECIFICATION	VALUE
NUMBER OF PHASE	3
NUMBER OF POLES	14
RESISTANCE/LINE(Ohms)@20°C	0.3±0.1
INDUCTANCE/LINE(mH)@1KHz	0.2±0.2
RATED VOLTAGE(VDC)	24
NO LOAD SPEED(RPM)	4250±10%
NO LOAD CURRENT(A)	0.8
RATED TORQUE(mNm)[lb-in]	284[2.52]
RATED SPEED(RPM)	3740±10%
RATED CURRENT(A)	5.0
BACK EMF CONSTANT(Vrms/kRPM)	4.2
TORQUE CONSTANT(mNm/A)	56.7
ROTOR INERTIA(g-cm ²)	1210
WEIGHT(Kg)[lb]	0.4[0.88]
TEMPERATURE RISE	MAX.80°C
INSULATION CLASS	B 130°C[266°F]
DIELECTRIC STRENGTH	500VAC 1MIN
INSULATION RESISTANCE(MOhm)@500VDC	100
AMBIENT TEMPERATURE	-25°C~50°C[-13°F~122°F]
DYNAMIC AXIAL LOAD(N)	10
DYNAMIC RADIAL LOAD(N)@SHAFT LENGTH 10 mm	28

WIRES CONNECTION		
FUNCTION	LEAD WIRE	WIRE TYRE
Motor phase U	BLACK	UL1430 AWG20
Motor phase V	YELLOW	
Motor phase W	RED	
GND	BLACK	UL1430 AWG24
Hall sensor 2	GREEN	
Hall sensor 1	BLUE	
Hall sensor 3	WHITE	
VHall 3.3...18VDC	RED	



	mm	APVD		3.25.2019
	UNIT	CHKD		
	1:1	DRN		
SCALE		SIGNATURE		DATE

BRUSHLESS DC MOTOR

60BLE34-24-01